

SENIOR LIVING & CARE DESIGN

Architecture

Interior Design

Landscape

Planning

LWDA





LWDA

Architecture
Interior Design
Landscape Design
Planning

We believe that design can change a business and a culture.

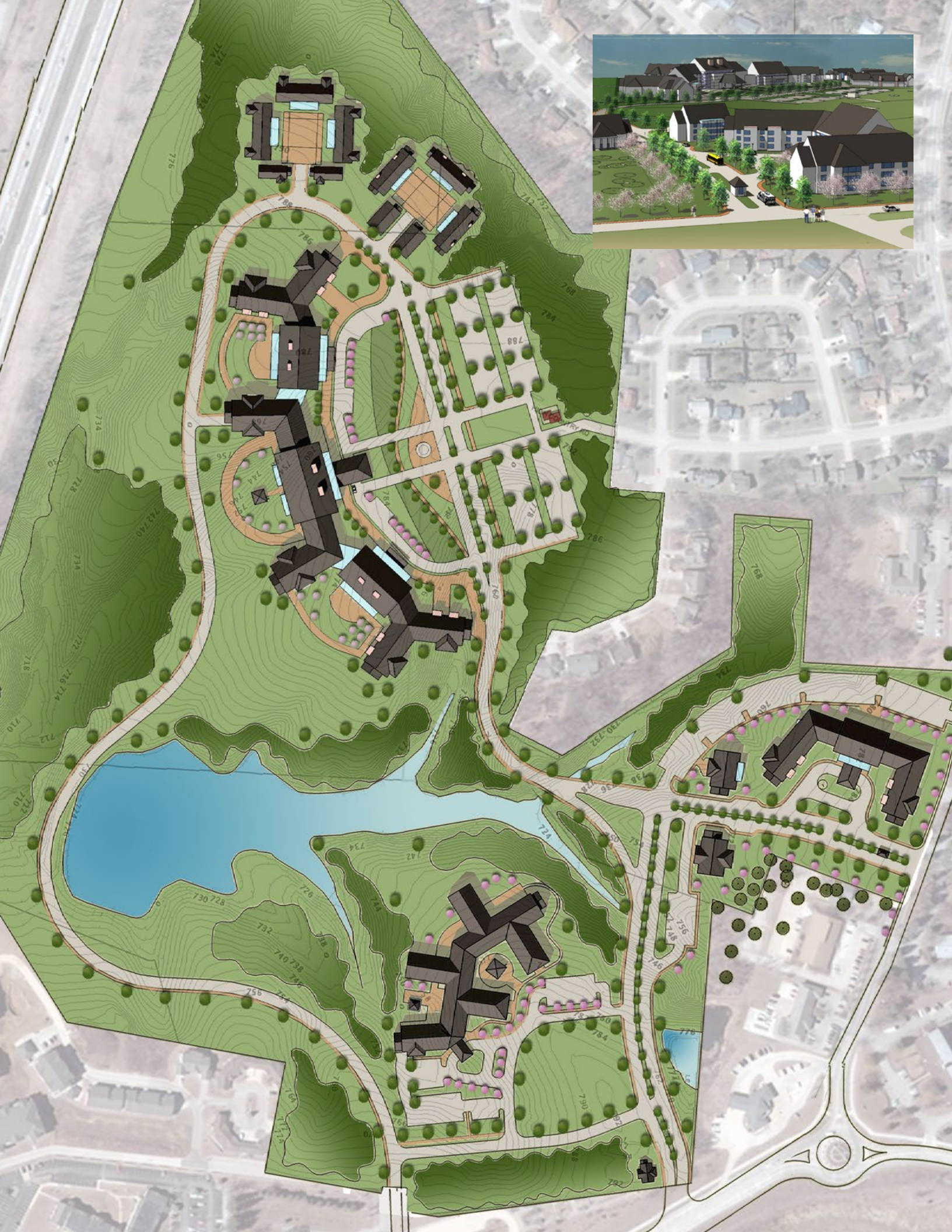
We are dedicated to designing supportive senior communities that foster quality of life, health, engagement, and enrichment.

LWDA.COM

LWDA, Inc.

45 Walden Street, Concord, MA 01742

978-371-1945



Improving the Quality of Life Through Design

Who We Are

Our Approach

LWDA

We are an intermediate size multidisciplinary design firm, located in Concord, Massachusetts, providing Architecture, Interior Design, Landscape Design, and Community Planning services. Our clients benefit from a complete design service solution that integrates the work of multiple disciplines.

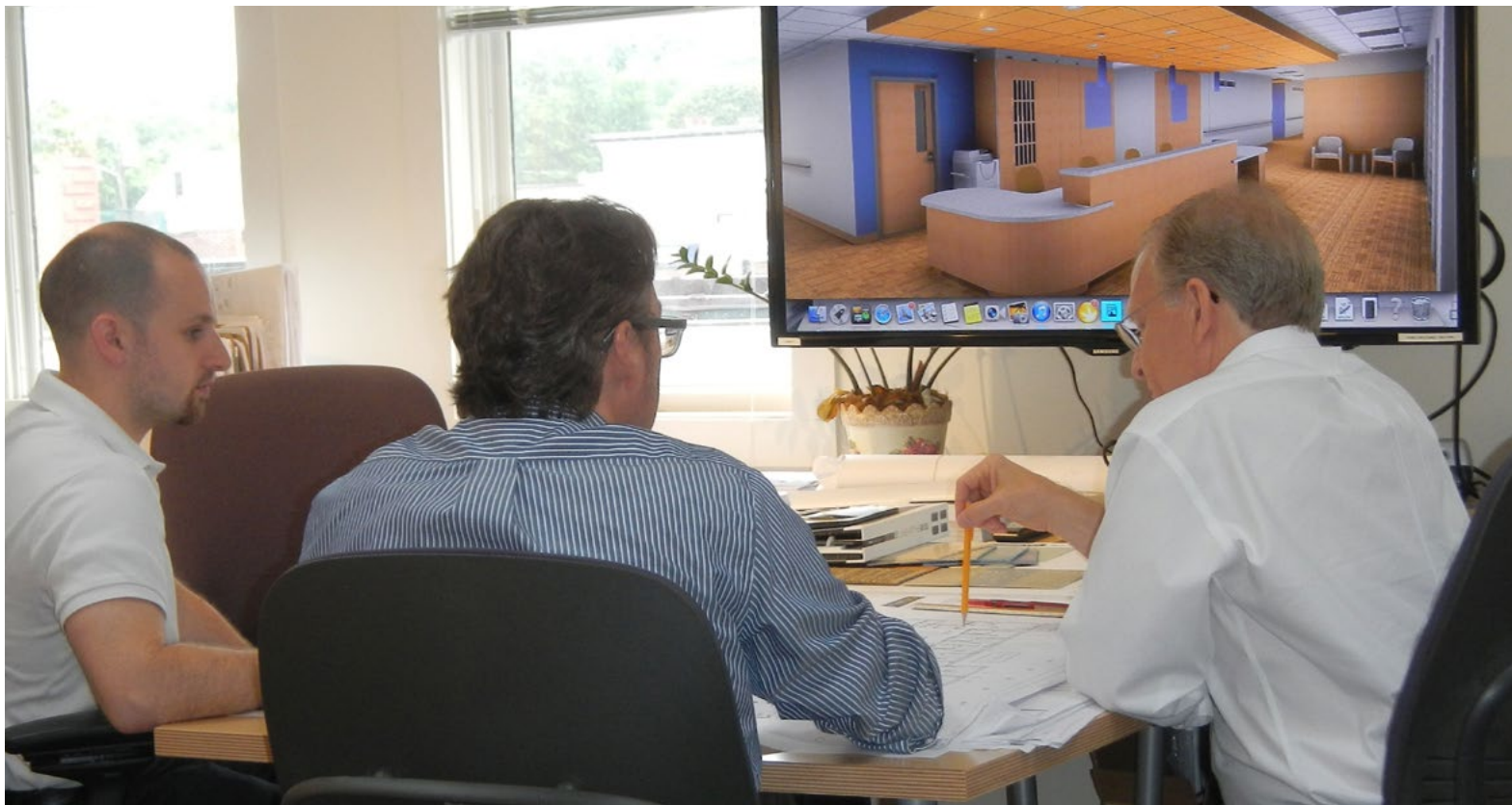
We act as Visionaries, Designers, Advisors, and Managers

Your vision and your mission are the heart of a project. To create successful projects, we do more than just design and specify your building; we learn how your organization functions so that we can explore alternatives that work for you. We collaborate with you to create a built environment that drives your mission. Our experienced working principals' direct involvement and our responsive Virtual Design Process allow us to manage the design and construction process to ensure that the end result is right for you.

We focus on service

Our experience includes Senior Living, Senior Care, Rehabilitation, and Acute Care environments. We ensure quality by focusing on design, service, innovation, and teamwork. Over the past 30 years we have worked with clients, designing small reconfiguration projects, space expansions, new construction, and master planning projects.

Our design method features a balanced approach between Person-Centered Design and Client/Owner objectives. We create supportive environments that foster quality of life, health, and productivity.



An Interactive Design Process

Our Clients

Multiple industries and cultures

We have learned that design can change a business and change a culture. Our diverse clientele allows us to leverage our broad knowledge across multiple specialties. Lessons learned on accessibility and universal design from senior care, for example, inform the design of patient rooms in acute care hospitals.

LWDA's portfolio covers the complete continuum of living and care including Senior Living, Long Term Care, Rehabilitation, Acute Care, Ambulatory Care, Medical Office Buildings, and Master Planning. Over the past 30 years, LWDA projects have encompassed over 150 Senior Care / Living facilities, 15 Acute Care Hospitals, 10 Specialty Care Hospitals, and 30 Corporate and Technology facilities totaling over \$750M in construction cost.

Project Management

A personal service approach guided by experienced working principals

Our working principals provide proactive project management that allows us to address issues before they become problems. The number of clients we retain and our strong working knowledge of the regulatory process underscores our reputation and dedication to our client's needs.

We believe that working in an open partnership based on experience and trust will produce a project that is appropriate, creative, and will result in a positive outcome that creates real value for all parties.

Sustainable Design

Embedded in our process

LWDA creates physical environments that are conducive to health, comfort, and well-being, and place a minimal burden on natural resources. In our practice, sustainable design is not an "added value" to otherwise conventional projects, but rather a thought process embedded in every step of project design. From site design to envelope analysis to daylighting studies to material selection, our projects embrace a holistic approach to systems and materials. We offer our clients a proactive, research-based, budget-conscious approach aimed at delivering cost-effective, maintenance-friendly, healthy buildings that minimize waste, maximize performance and deliver the best value over the life of the project.

LWDA is fully conversant with the requirements of LEED, Well Building Standard, Living Building Challenge, and Passive House. Over half of our professional staff is LEED accredited.



A Principal Led Team on Every Project

Leadership

Each project is staffed by working principals and senior architects or interior designers using our hands-on management approach that can benefit from our breadth of knowledge and leadership skills throughout the entire project process to produce quality designs.



THOMAS C. LEVI, AIA, is the founder and *MANAGING PRINCIPAL*. He is an Architect and Urban Designer with over 45 years of experience in design and planning and works across all disciplines and project types.

CONTACT: TLEVI@LWDA.COM



RUTH NEEMAN, AIA, PRINCIPAL, is director of LWDA's Senior Living Studio, with 40 years of experience.

CONTACT: RNEEMAN@LWDA.COM



NEAL K. EMMER, AIA, LEED GREEN ASSOCIATE, PRINCIPAL, is director of the LWDA's Small Project Studio, and co-director of the Healthcare Design Studio with over 40 years of experience.

CONTACT: NEMMER@LWDA.COM



JONATHAN GYORY, AIA, ACHA, LEED AP, PRINCIPAL is an architect with over 35 years experience. He is LWDA's Healthcare Design Studio co-director.

CONTACT: JGYORY@LWDA.COM

Our staff includes professionals with extensive experience in Planning, Design, and Management. We are Licensed Architects across the country with NCARB reciprocity licensing available in all 50 states, nationally Certified Interior Designers (NCIDQ), and LEED Accredited Professionals.

3D Virtual Design and Building Information Modeling (BIM) Process



BIM COORDINATION MODEL



DESIGN SKETCH



DESIGN DEVELOPMENT RENDERING



PROJECT PHOTOGRAPH



3D Virtual Design

Our 18-year commitment to 3D Virtual Design and BIM implementation has been immensely successful and continues to improve each year. It is a creative, interactive, hands-on design process that allows client and architect to communicate clearly and design better buildings. Our clients see, walkthrough and experience their projects during the design process. We actively engage users in real time interactive design process, on-site or online.

We offer this approach as part of our Basic Services because it saves the client, and us, time and money. It takes the guesswork out of communication and design, turning the process into something fun and enriching for the entire team. Earlier, better informed decisions and design are keys to a successful project.

Virtual Design, BIM Coordination, & Construction Administration

Virtual Design paired with Building Information Modeling (BIM) allows the architectural and engineering team and the construction team to coordinate the design more thoroughly with interdisciplinary models. When combined with clash detection software, errors are reduced, and time and money is saved.

Marketing

Virtual design also provides a perfect tool for sales and marketing for our clients. Renderings from our 3D VR models communicate design intent quickly, and can be enhanced to form the basis of sales brochures and videos, marketing campaigns, and fund raising materials. The project can be web walkthrough-ready at the beginning of construction, 12- 24 months ahead of the completion of the project, for a head start on sales. Our 3D Virtual Design Services include:

Basic Services:

- Preliminary Renderings (all phases)
- Virtual Interactive Walkthroughs, (all phases - BIMx)
- Integrated Building Information Modeling (BIM) with Virtual Engineering Coordination (Structural, Mechanical, Plumbing, Fire Protection)

Supplementary Services:

- Photo-realistic Renderings
- Virtual Building Tours (3D spheres, virtual reality tours)
- Sales Animations and Movies



LWDA

Architecture
Interior Design
Landscape Design
Planning

Creating Livable and Engaging
Communities for Seniors



Continuum of Living and Care Experience

Over the last 30 years, LWDA has completed numerous Senior Living and Senior Care projects throughout New England and across the U.S. We are a client-centric firm, organized around an experienced group of working principals who lead, manage, and create meaningful solutions with our clients to help them realize their vision. Our experience designing communities across the continuum of living and care allows us to design person centered environments that are engaging, supportive, and safe. We understand how person centered design can revitalize older facilities and turn them from custodial care models into residential models.

SENIOR LIVING & CARE DESIGN



Center for Advanced Physical Therapy

D'Youville Center for Advanced Therapy at D'Youville Life & Wellness Community, New England Rehabilitation Hospital, Lowell, MA



To meet growing community needs and current market trends, D'Youville Life and Wellness Community opened an integrated two-story center that represents a new paradigm for rehabilitative services in New England.

The Center brings together the D'Youville Center for Advanced Therapy, providing short-term transitional physical rehabilitative, complex and hospice care services, and the New England Rehabilitation Hospital Satellite at Lowell, providing short-term acute care physical rehabilitative services.

It features a 33-bed Transitional Care Unit on the upper floor (including four complex care and hospice suites), a 21-bed acute rehabilitation satellite hospital on the garden level, and an expanded replacement kitchen serving the entire campus. Each level has its own state of the art rehabilitation gym.

CLIENT	D'Youville Life & Wellness Community
PRINCIPAL	Thomas C. Levi, AIA Willie W. Wong, AIA, ASLA, LEED AP BD+C Philip Dowds, AIA
SERVICES	Architecture, Interior Design, Landscape Architecture
SIZE	50,000 SF



Mixed Occupancy Senior Community

Geer Village
Canaan, CT

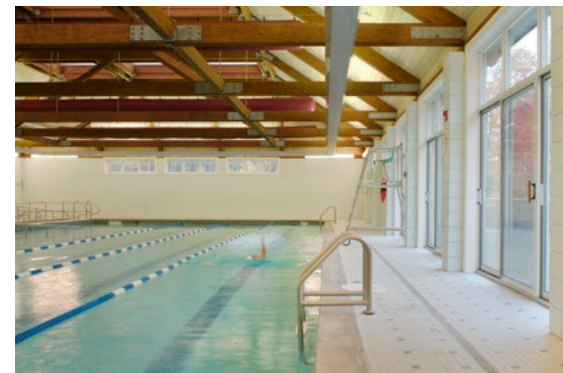


Geer Village is a mixed occupancy retirement community that shares a large rural site with other care facilities of the Geer Corporation. The core program consists of 33 Independent Living apartments, 59 Assisted Living apartments, and a Memory Care Unit accommodating 30 residents in single and shared apartments, all supported by a range of lounges, libraries, participation kitchens, and activity rooms.

CLIENT	Geer Village
PRINCIPAL	Ruth Neeman, AIA
SERVICES	Architecture, Interior Design, Landscape Architecture
SIZE	128,000 SF



Thanks to the visionary leadership of an exceptional client, Geer created partnerships that attracted numerous amenities not often found in senior living environments, such as a local cable TV broadcast studio, a bistro concession, the local branch of the YMCA with pool and fitness center, and major public assembly rooms. The intent was to make Geer Village the town of Canaan community center, where elders are an integral part of community life.



Memory Support Rest Home

Oasis at Dodge Park
Worcester, MA

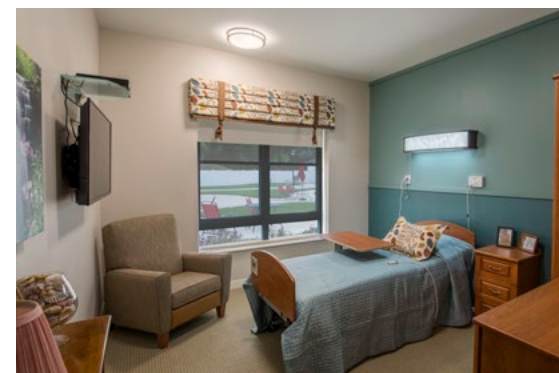


The Dodge Park Rest Home needed to expand Memory Support services to serve a growing population. The Owner purchased property across the street for "Oasis at Dodge Park" and managed to secure a Special Project status from the Massachusetts Department of Public Health, to classify the new building as a Memory Care Unit, in light of an exceptional program and performance.

CLIENT	Oasis at Dodge Park
PRINCIPAL	Ruth Neeman, AIA
SERVICES	Architecture, Interior Design, Landscape Architecture
SIZE	30,000 SF



This innovative facility will provide residents with family-like groupings around spacious common areas to promote wellness and interaction. To ensure that all residents can benefit from connections with the outdoors, there are secure outdoor recreational courtyards including an urban court, and a large therapeutic courtyard.



Skilled Nursing and Rehabilitation Center

Spaulding Nursing & Therapy Center Brighton
Brighton, MA



To better serve its physically challenged long-term care residents and to expand its short-term rehabilitation options, Spaulding Rehabilitation Network consolidated two outmoded facilities into the Spaulding Nursing and Therapy Center Brighton. This renovated long-term care site features ample physical and occupational therapy space, accessible toilets and bathing, inviting and comfortable resident spaces, and the full complement of administration and support spaces.

CLIENT	Spaulding Rehabilitation Network
PRINCIPAL	Ruth Neeman, AIA Katherine Robinson, AIA, LEED AP
SERVICES	Architecture, Interior Design
SIZE	123 Beds 55,000 SF



LWDA's design scope included substantial interior reconfiguration, interior design, window and roof replacement, structural modifications, extensive HVAC, lighting, and IT upgrades, as well as modifications to power, plumbing, and fire protection systems. A new medical gasses distribution infrastructure was added for future respiratory supported residents. Project challenges included a code minimum floor plate, tight

construction budget and a fast-track, 14-month design to occupancy schedule. Design features include open floor plan, energy efficient, multi-zone LED lighting, and a resident room redesign that introduced human scale proportions by de-emphasizing the high ceiling volume.



Skilled Nursing and Rehabilitation Center

South Cove Manor Rehabilitation Center
Quincy, MA



"The mission of South Cove Manor (SCM) is to provide individualized nursing and rehabilitative care that celebrates Chinese cultural values." The building's design reflects that mission and is based on the traditional Chinese Siheyuan "courtyard" small house model of family and communal space, connection with the community and Chinese imagery and history.

141 residents live on three floors; each floor's nursing unit is subdivided into two smaller "courtyards". The nursing units' interior open plan design is based on resident centered care models that enhance resident experience of engaged living and staff interaction, by reducing barriers and creating spaces that encourage independence, mobility, and personal relationships.

CLIENT	South Cove Manor
PRINCIPAL	Thomas Levi, AIA Willie W. Wong, AIA, ASLA, LEED AP BD+C Philip Dowds, AIA
SERVICES	Architecture, Interior Design, Landscape Architecture
SIZE	86,000 SF

Resident rooms open onto the central "courtyard" activity/dining area, with seating options and a kitchenette.

This model is in stark contrast to the 30-year old original SCM double-loaded corridor building that was planned with a medical care model.



Assisted and Independent Senior Living Community

The Gables at Winchester
Winchester, MA

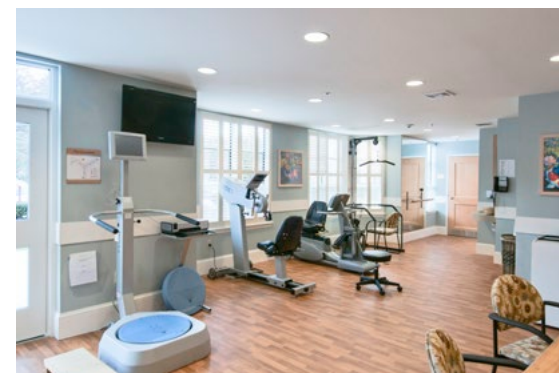


The Gables at Winchester, a 125 apartment Assisted and Independent Living community, upgraded its facility with a series of small projects over a five year period. The approach included a new 'brand and image' for the common areas and adding new resident amenities including a new Wellness Center, Theatre, Library/Computer Center and Multipurpose Activity Room/ Informal Dining/Server Kitchen adjacent to a new outdoor court. The Theatre and Library/ Computer Center were located in 'underutilized/found' areas of the building.

CLIENT Five Star Senior Living
PRINCIPAL Thomas Levi, AIA
SERVICES Architecture, Interior Design, Landscape Architecture



Site improvements include a new entry court, parking, and exterior terrace along the activity and dining areas.



Skilled Nursing Memory Support

Edgewood Retirement Community
North Andover, MA



To promote its "aging in community" philosophy and continuum of care mission, Edgewood Retirement Community embarked on a renovation and expansion consisting of a specialized Memory Support Unit addition, a social day program, improved employee facilities, a new bistro for casual dining, living room, patio, primary care, and a PT/OT clinic for independent living residents.

CLIENT	Edgewood Retirement Community
PRINCIPAL	Ruth Neeman, AIA Thomas Levi, AIA
SERVICES	Architecture, Interior Design, Landscape Architecture
CORE & SHELL ARCHITECT	Margulies Perruzzi Architects
SIZE	40 Dementia Care Beds 26 LTC Beds



The organization and design concept of the Memory Support Unit is based on a central secure court visible from the dining, two activity rooms, nursing station and a large portion of the resident rooms. The internal walking path is circular around the edge of the secure exterior court and connects with a second secure court walking path.



Assisted and Independent Senior Living Community

Maplewood at Weston
Weston, MA



Clubhouse and Community Amenities

Edgewood Retirement Community
North Andover, MA



LWDA as Architect and TAT Interior Design collaborated to redesign Maplewood, a 20 year-old IL/AL facility in need of a major repositioning, to remain competitive in a demanding marketplace. The project goal was to create a new brand aesthetic for the main façade and interior of the building along with upgrades and relocations of major common areas: main entry, lobby, corridors, Assisted Living and Memory Care Unit.

CLIENT	Maplewood Senior Living
PRINCIPAL	Thomas Levi, AIA
SERVICES	Architecture; Interior Design by The Architectural Team (TAT)
SIZE	23,000 SF



The 14 bed "Tides Unit" is designed to serve residents with early stage Dementia as a complement to the 22 bed "Currents" unit for advanced stages of cognitive impairment. The new living room and casual dining area was developed with views and access to the common court outside, a reading lounge was opened up to the corridor and all resident apartment entries were redesigned.



To respond to current and future residents' expectations, Edgewood initiated a renovations and addition project that focused on what the residents most care about - Purposeful living.

CLIENT	Edgewood Retirement Community
PRINCIPAL	Ruth Neeman, AIA
SERVICES	Architecture, Interior Design

The small outdated fitness center was expanded to include a yoga and exercise studio, workout rooms, and a spa addition. The front of the common building was expanded to include a new art studio, gallery space, gift shop, classrooms and meeting rooms for the residents. The addition blended into the traditional New England architecture that is part of Edgewood identity.



Senior Living Community Master Plan & Renovations

Aspenwood Senior Living Community
Silver Springs, MD



Community Center and Master Plan

Heartlands at Ellicott City
Ellicott City, MD



Aspenwood Senior Living Community, which houses Independent and Assisted Living residents, is a three-story, 137 unit building. The design focused on creating open areas to improve resident socialization and participation, with improvements to the common areas including an enlarged entry and lobby, six new activity/common areas/lounges, including Memory Care dining and activity room, four exterior courts and terraces connected by a new exterior corridor system, and a Wellness Center addition housing a fitness space and therapy pool.

CLIENT Five Star Senior Living
PRINCIPAL Thomas Levi, AIA
Willie W. Wong, AIA,
ASLA, LEED AP BD+C
SERVICES Master Planning,
Architecture, Interior
Design, Landscape
Architecture
SIZE 200,000 SF

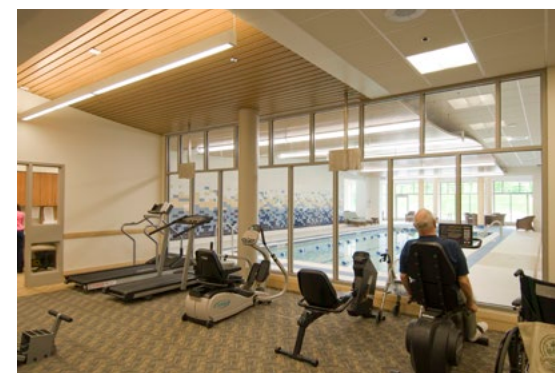


First floor sun rooms were added to apartments along the new exterior promenade. Large windows located above the new sun rooms were added to the upper floor living rooms.



A master plan for the Heartlands at Ellicott City retirement community concluded that much of the community center was in need of upgrading, and also recommended a new porte-cochere and elevator tower. The Wellness/PT/OT renovation and addition was one of the first projects implemented, featuring an indoor therapy and recreation pool, fitness area, rehabilitation suite, outdoor patio, and salon. Subsequent projects included the expansion of dining areas, offices, entrance, living room, library, and Bistro.

CLIENT Five Star Senior Living
PRINCIPAL Willie W. Wong, AIA,
ASLA, LEED AP BD+C
Thomas C. Levi, AIA
SERVICES Master Planning,
Architecture, Interior
Design, Landscape
Architecture



Mixed Occupancy Senior Community

Hancock Park
Quincy, MA

Mixed Occupancy Senior Community

Sophia Snow Place
West Roxbury, MA



This mixed occupancy senior care project on a tight urban site includes a 142-bed nursing home with a self-contained dementia care unit, 40 Assisted Living apartments, and an Adult Day Center. The mid-rise steel frame structure is clad in masonry and precast veneer to compliment the style of Quincy center architecture.

The challenges of the tight sloped site were turned into design features: outdoor access from multiple levels, and a landscaped plaza above a partially buried parking garage. Careful planning resolved complex issues of security and convenience for multiple access points and elevator banks.

CLIENT BaneCare
(Welch Senior Living)

PRINCIPAL Ruth Neeman, AIA

SERVICES Architecture

SIZE 180,000 SF



Sophia Snow Place combines 36 resident rooms of a Level IV Rest Home with 66 affordable Independent Living apartments for the elderly. A tight site required a two phase project: first, an addition to the existing Rest Home large enough to relocate residents, and second, demolition of the old Rest Home and construction of the remainder of the building. Maintaining access and code-compliant accommodations at all times was a key consideration.

CLIENT Sophia Snow Place

PRINCIPAL Ruth Neeman, AIA

SERVICES Architecture, Interior Design

SIZE 102,800 SF



The Independent Living apartments are one bedroom, but feature a unique layout where a den can double up as a guest room if necessary. Two front doors separate the traffic of the two occupancies, but are served by a single administrative desk.

Memory Support Residence and Addition

The Remington Club
San Diego, CA

Independent Living Cottages and LTC Facility

The Community at Pond Meadow & Pond Home
Wrentham, MA



As the population of the existing Remington Club AL community aged, the need for appropriate environments for residents with Alzheimer's disease and other memory impairments became apparent. The solution was to renovate a wing of the existing building with special "cueing and clueing" needs of people with dementia. A center hub of common spaces including dining, activities, and staff services was created, with new space that focuses on a secure garden. Secure walking loops were developed and alternative living areas provide choice and variety for residents and staff.

CLIENT Five Star Senior Living
PRINCIPAL Willie W. Wong, AIA, ASLA, LEED AP BD+C
SERVICES Architecture, Interior Design, Landscape Architecture



A master plan was developed to expand the mission of Pond Home - an existing Long Term Care facility, to serve healthy and mobile retirees in single story accessible cottages. The Pond Home had approximately 50 Acres of undeveloped meadow land behind and adjacent to their property, available for this project. The Cottages at Pond Meadow offer one and two bedroom units, featuring cathedral ceiling living room, den, four-season porch, a private patio and an attached garage. The cottages are built in neighborhood clusters around common greens.

CLIENT The Community at Pond Meadow
PRINCIPAL Ruth Neeman, AIA
SERVICES Master Planning, Architecture, Interior Design, Landscape Architecture
SIZE 66 IL Cottages
34 Bed LTC



An adjacent historic barn was renovated and converted into a community center. The original Long Term Care building underwent major renovations and received a new addition featuring private rooms and common area.

Senior Living Community

Private Equity Developer
Location Undisclosed



This proposed 556 apartment Senior Living Community is comprised of 450 Independent Living apartments, 50 Assisted Living apartments, 40 bed Enhanced Support apartments and 16 Townhouse/ Cottages located on 100 acres in a four building complex. The integrated support campus with a continuum of care model is associated with a local medical university for geriatric, skilled nursing, dementia care and healthcare services. This project is in planning.

CLIENT	Name Withheld at Owner's Request
PRINCIPAL	Thomas C. Levi, AIA Willie W. Wong, AIA, ASLA, LEED AP BD+C
SERVICES	Campus Planning, Architecture, Landscape Architecture



Senior Living Community

Salmon Health and Retirement
Medway, MA



This 425,000 SF, 57 acre wooded retirement community on the banks of the Charles River offers a variety of living styles and amenities. It is inspired by the history and tradition of the Town of Medway, and provides numerous nature trails around vernal pools. The main building has 56 Independent Living (IL) and 60 Assisted Living (AL) apartments, and will also serve 40 residents living with dementia, in private and shared apartments.

The site includes 54 detached Independent Living cottages, plus 15 cottages attached to the main residence. Resident amenities are distributed on each floor of the main building and in adjacent stand-alone structures including living rooms, bistro, dining areas for IL and AL, library, meeting rooms, hair salon, fitness center with a swimming pool and outdoor

CLIENT	Salmon Health and Retirement
PRINCIPAL	Willie W. Wong, AIA, ASLA, LEED AP BD+C
SERVICES	Architecture, Planning (in collaboration with Dario Design)
SIZE	425,000 SF

recreation areas. A clubhouse pavilion that overlooks the river, a medical office building, and an Adult Day Center will serve the community at large, as well as the residents.



Luxury Private Residence

Millennium Tower
Boston, MA

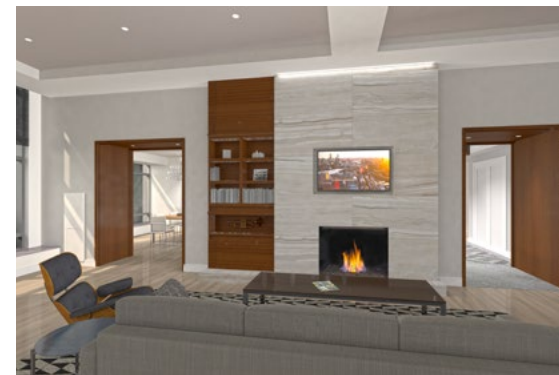
Luxury Private Residence

Ritz Carlton
Boston, MA



This contemporary luxury penthouse located near the top of the Millennium Tower in Downtown Boston occupies 4,000 SF and includes 4 bedrooms, 5 baths, living spaces and a private terrace. The client requested a residence where he could entertain, as well as work. The openness between the living, dining and kitchen help to achieve this, and the views of Boston Common and the Charles river provide a breathtaking backdrop.

CLIENT Undisclosed
PRINCIPAL Thomas C. Levi, AIA
Neil Harrigan, AIA
SERVICES Interior Design
SIZE 4,000 SF



This project involved the renovation of a duplex penthouse in the Ritz Carlton tower in downtown Boston. The interiors were upgraded to a clean modern look that reflects the client's preferred aesthetics. Open living spaces flow into one another, broken up by a central contrasting divider wall.

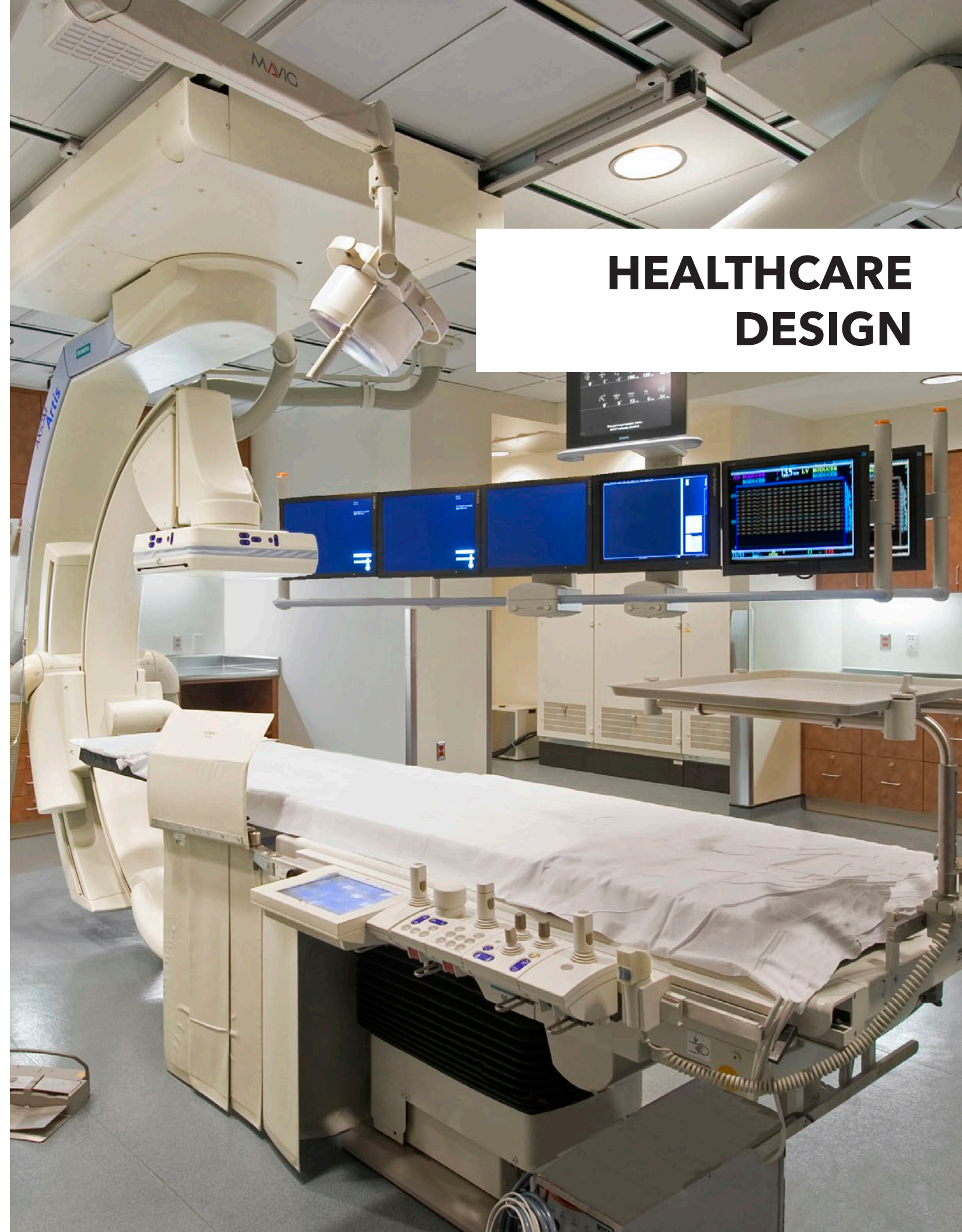
CLIENT Undisclosed
PRINCIPAL Thomas C. Levi, AIA
Neil Harrigan, AIA
SERVICES Interior Design
SIZE 4,000 SF



Expertise Designing Across the Continuum of Care

LWDA specializes creating healing environments in the continuum of care, including campus master planning, building and renovation projects for acute care, inpatient and ambulatory healthcare, and rehabilitation care. Our broad expertise accommodating the most vulnerable populations helps sensitize our team to the many challenges that confront hospital patients and particularly patients who are elderly. Levels of acuity vary from one environment to another, but the tenets of good design hold true across the spectrum.

Lessons learned in the healthcare arena include strategies for accessibility; sustainable approaches to design and construction; a focus on maintaining the dignity of the resident or patient; views of nature; the use of durable, non-toxic finishes; interior color palettes that enhance wayfinding through contrast and clear hierarchy; appropriate lighting levels that adjust over the course of the day to respond to circadian rhythms; acoustic comfort; and infection control.



HEALTHCARE DESIGN

1st Floor Entry and Mezzanine Cafeteria

Boston Medical Center
Boston, MA

Maternity Department: The Birthplace

Boston Medical Center
Boston, MA



This “enabling project” of the BMC master plan created a new front door for the campus. Circulation was reorganized and wayfinding improved by linking three of the four main campus lobbies to balance BMC’s heavy outpatient traffic.

A new design for the Yawkey Building lobby and cafeteria, together with a new 24/7 Coffee/ Gift Shop and Family Waiting room in the Menino Pavilion lobby helped revitalize the public realm.



The new 200-seat Cafeteria overlooking the Yawkey Lobby combined two previous food service facilities that were displaced by an expanded surgery department; it offered a variety of international cuisines prepared to order, and featured a Demonstration Kitchen to teach healthy cooking, and a multi-media wall to advertise hospital programs and information.

CLIENT	Boston Medical Center
PRINCIPAL	Thomas Levi, AIA Jonathan Gyory, AIA, ACHA, LEED AP
SERVICES	Architecture, Interior Design



The new Maternity Unit integrates Triage, Labor and Delivery (LDR), C-Section, NICU, and Antepartum, Postpartum Rooms, formerly split on two levels, into a single 50,000 SF floor to eliminate duplication of staffing and support spaces. The Birthplace includes 9 Labor Delivery rooms (5 with in-room tubs to assist labor) and 30 private antepartum/postpartum patient rooms. The 21-bed NICU offers 9 private family rooms, and 3 quads to provide the variety of care options recommended for neonates.

CLIENT	Boston Medical Center
PRINCIPAL	Thomas Levi, AIA Jonathan Gyory, AIA, ACHA, LEED AP
SERVICES	Architecture, Interior Design
SIZE	50,000 SF



LDRs and Postpartum rooms feature hospitality/spa inspired finishes, adjustable indirect LED lighting, and family zones.

Critical Care Unit and Healing Garden

Lowell General Hospital
Lowell, MA



A former Emergency Department was transformed into a new, state-of-the-art 11 bed ICU that will eventually be expanded with the renovation of another ICU directly above.

A 3,000 SF corridor addition wraps the perimeter of the renovated space to provide a new family zone with waiting and lounge areas. Family members can access patient rooms without penetrating the clinical core, removing a source of conflict that allows staff to concentrate on providing patient care. Utilizing 3D virtual walkthroughs and Building Information Modelling, LWDA demonstrated to the Department of Public Health that the patient rooms maintained views of nature through a new curtain wall exterior that allows daylight to penetrate through the visitor corridor and deep into patient rooms.

A new Healing Garden is located in the old drop off of the former Emergency Department, featuring walking paths, seating areas and a contemplative labyrinth.

CLIENT	Lowell General Hospital
PRINCIPAL	Neal K. Emmer, AIA
SERVICES	Architecture, Interior Design, Landscape Architecture
SIZE	3,000 SF New 12,000 SF Renovation

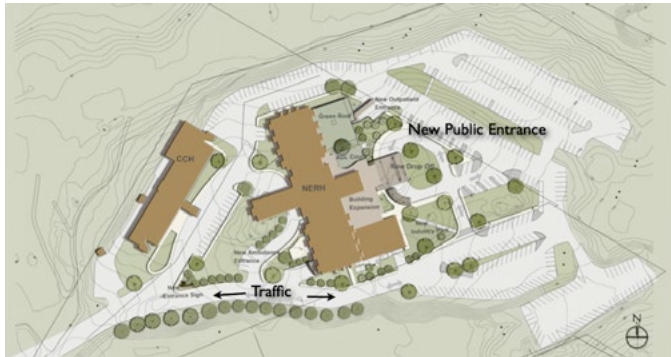


Master Plan and Renovations

New England Rehabilitation Hospital
Woburn, MA

Master Plan and Various Projects

Noble Hospital
Westfield, MA



A master plan for the New England Rehabilitation Hospital campus (NERH) has guided subsequent development on this comprehensive rehabilitation hospital campus that offers inpatient and outpatient services with twelve general and twelve specialty programs.

Subsequent renovation projects include a reorganized site with a new traffic pattern, five 36 bed Inpatient Rehabilitation Facility units, a PT/OT outpatient clinic, administration office space, infrastructure upgrades, and a new lobby.



CLIENT	Five Star Senior Living
PRINCIPAL	Thomas Levi, AIA Willie W. Wong, AIA, ASLA, LEED AP BD+C
SERVICES	Planning, Architecture, Landscape Architecture
SIZE	Campus



A comprehensive master plan for the 240,000 SF Noble Hospital defined campus needs, prioritized recommendations, and created a 10-step renovation to be implemented over a 10 year period. The initial work included expanding the Emergency Department, creating a new main entry, and expanding doctors' office space.

Subsequent renovation projects include a lobby renovation and a new MRI suite.

CLIENT	Noble Hospital
PRINCIPAL	Jonathan Gyory, AIA, ACHA, LEED AP
SERVICES	Planning, Architecture, Interior Design
SIZE	240,000 SF

Master Plan and Renovations

Braintree Rehabilitation Hospital
Braintree, MA

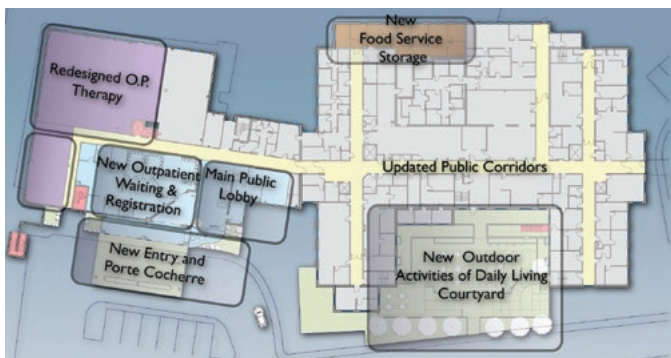
Mental Health Center Master Plan

Erich Lindemann Mental Health Center
Boston, MA

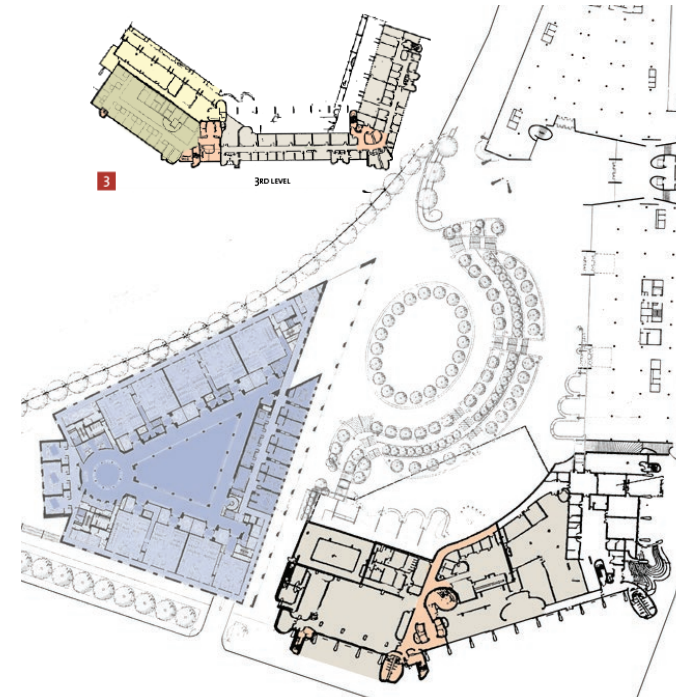


A master plan for the Braintree Rehabilitation Hospital campus clarified hierarchy and traffic circulation with a new outpatient drop-off and short term parking area, and expanded an Activities of Daily Living (ADL) courtyard to extend physical therapy outdoors.

Subsequent renovation projects include four 30 bed Inpatient Rehabilitation Facility units, a PT/OT clinic, and new lobby and registration area.



CLIENT	Five Star Senior Living
PRINCIPAL	Thomas Levi, AIA Willie W. Wong, AIA, ASLA, LEED AP BD+C
SERVICES	Planning Architecture Landscape Architecture
SIZE	Campus



The ELMHC wanted to downsize from 200,000 to 86,600 SF as a part of a Massachusetts Department of Mental Health reorganization. LWDA designed a master plan to accomplish this over a three year period, providing reconfigured plans and adjacencies for two forensic inpatient psychiatric adult units, a forensic inpatient children unit, an outpatient psychiatric clinic, an outpatient psychiatric overnight shelter, a high school for adolescent patients, recreation and therapy activity areas, and a new dining facility.

CLIENT	Erich Lindemann Mental Health Center
PRINCIPAL	Thomas Levi, AIA
SERVICES	Master Planning
SIZE	86,000 SF

Spaulding Rehabilitation Hospital Master Plan

Spaulding Rehabilitation Hospital
Boston, MA

Medical Center Redevelopment Master Plan

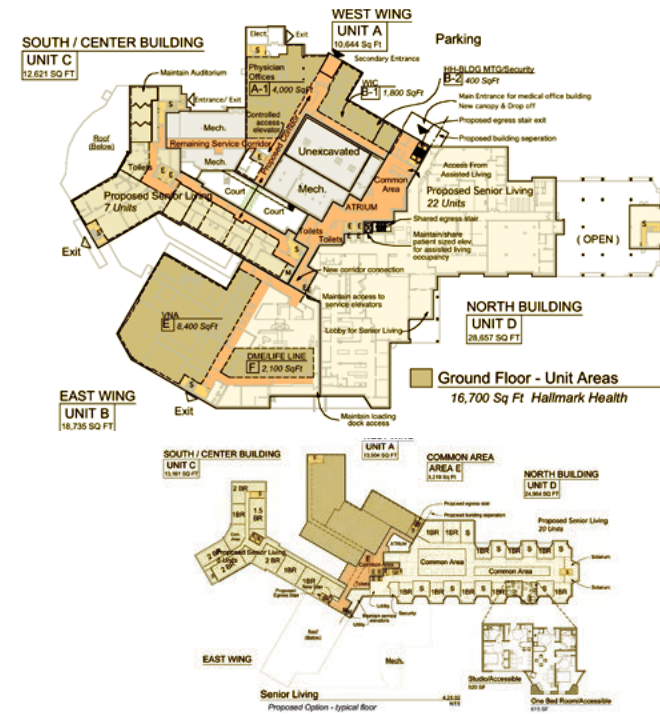
Malden Medical Center
Malden, MA



This detailed master plan of Spaulding Hospital's Nashua Street building explored the possibilities for renovation and reuse of the existing facility. A ten-story, 118,000 SF, 240 bed patient wing was proposed to replace all patient rooms with single occupancy bedrooms, with vacated space used for support functions.

Additional studies were undertaken to explore adjacent sites for relocation, and ultimately the Hospital elected to relocate to a new facility in Charlestown. Interim hospital upgrade projects included an Addiction and Spinal Cord Injury Program, Brain Injury Rehabilitation Program, a PT Gym, and the Gait and Sleep Laboratories.

CLIENT	Spaulding Rehabilitation Hospital
PRINCIPAL	Thomas Levi, AIA
SERVICES	Master Planning
SIZE	118,000SF



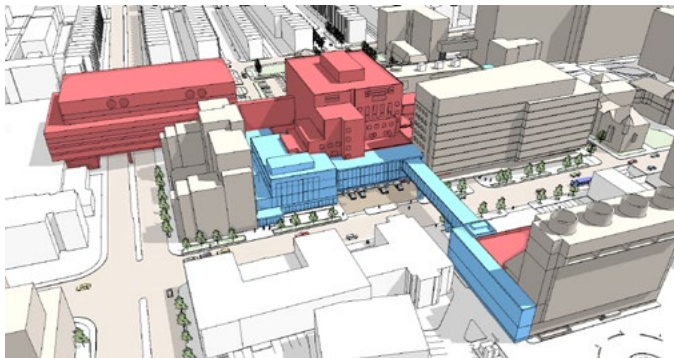
This master plan for facility reuse explored the opportunities of redeveloping a five-building complex at the former Malden Medical Center into a mixed-use project comprised of an Urgent Care Center and Medical Clinic, administration services for Hallmark Health, medical offices, and various scenarios for Senior Living.

Proposed renovations include new entries, common corridors, engineering systems, and building shell improvements.

CLIENT	Hallmark Health
PRINCIPAL	Thomas Levi, AIA
SERVICES	Master Planning
SIZE	Campus

Master Plan and Renovations

Boston Medical Center
Boston, MA



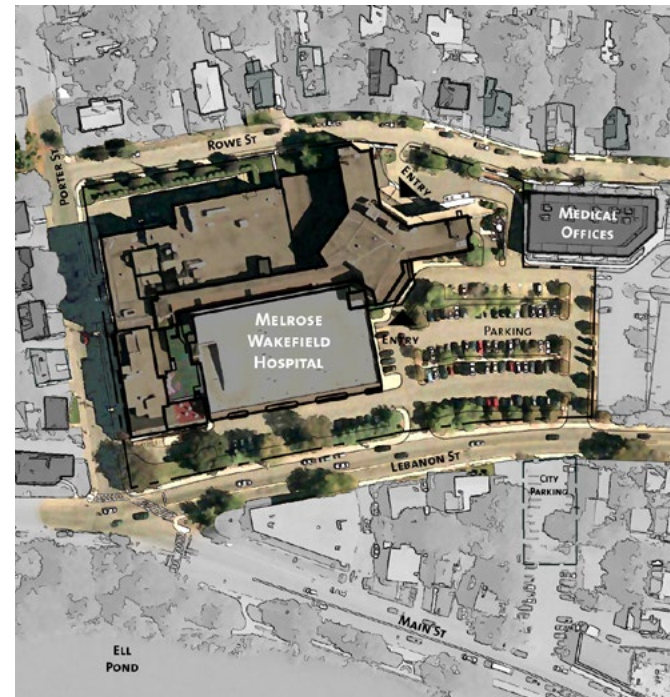
A \$270 million master plan of the BMC campus consolidates two adjacent campuses with duplicate inpatient and outpatient services to improve patient care, save money and increase efficiency. Major interventions include a reconfigured Emergency Department, inpatient and outpatient Surgery Department, inpatient and outpatient Imaging services, and 35 other departments to streamline services. A new Infill Building, Co-Generation Power Plant, extensive utility infrastructure, and multiple renovations are orchestrated in a multi-phase five part plan.

CLIENT	Boston Medical Center
PRINCIPAL	Thomas Levi, AIA Jonathan Gyory, AIA, ACHA, LEED AP
SERVICES	Master Planning, Architecture, Interior Design
SIZE	Campus



Master Plan and Facility Assessment

Melrose-Wakefield Hospital
Melrose, MA



A Facility Assessment and Master Plan for campus expansion has guided development at the suburban Melrose Wakefield Hospital for the last twenty years and has led to over 100 projects, including renovations to Emergency Services, Imaging, Laboratory, Med Surgical Units, Cardiac, Birthing, Physical/Respiratory Therapy, Ancillary and Support Services, Outpatient Services, Physician Offices, Medical Office Building, and a Parking Garage Addition.

CLIENT	Hallmark Health
PRINCIPAL	Thomas Levi, AIA
SERVICES	Master Planning, Facilities Assessment
SIZE	Campus

A building and a landscape should work together

Our approach to landscape design is grounded in holistic observation. We create healing gardens, courtyards, and campuses that bring landscape and building together. Our mission is to design with purpose, solve spatial problems with imagination, and implement solutions that are both beautiful and sustainable. We work in harmony with existing natural conditions so that building and landscape work together.

LANDSCAPE DESIGN



Courtyard Renovation

Pond Home
Wrentham, MA

Activities of Daily Living Courtyard

Braintree Rehabilitation Hospital
Braintree, MA



An existing courtyard was enlarged and made accessible to promote outdoor daily living in a beautiful setting. A three-tier water feature mimics the flow of a natural brook that feeds a small pool. A new trellis provides a comfortable and protected seating area with an operable shade fabric and night lighting.

The court is accessed via a new walkway and porch renovation. Raised planting beds offer residents an opportunity to garden and share an outdoor activity with others, while beautifying their environment.

CLIENT Pond Home
PRINCIPAL Willie W. Wong, AIA, ASLA, LEED AP BD+C
SERVICES Landscape Architecture
SIZE 8,500 SF



This therapeutic landscape courtyard is designed to integrate the elements that patients will encounter upon discharge: street curbs, outdoor ramps, handrails, gates and latches, mailboxes, and various walking surfaces ranging from peastone, concrete, brick pavers, textured concrete, and cobblestones.

Recreational activities include cutting garden planters and flower potting stations, a secure mini-golf course, and sports-surface basketball hoop zone. The popular space includes an outdoor dining area for staff, residents, and visitors. It is used year round for therapy and recreation.

CLIENT Braintree Rehabilitation
PRINCIPAL Willie W. Wong, AIA, ASLA, LEED AP BD+C
SERVICES Landscape Architecture



Memory Support Courtyard Renovation

The Christopher House
Worcester, MA

Healing Garden

Lowell General Hospital Critical Care Unit
Lowell, MA



The Christopher House is a 156-bed not-for-profit care center that provides comprehensive continuum of care including subacute, rehabilitation, long term, and respite care. An unused portion of the grounds adjacent to the 41-bed Alzheimer unit was redesigned as a secure courtyard to create a memory garden. The garden, designed as a walking loop around a large green and a gathering place sized for outdoor music and family events, augments recreational activities previously limited by a small and confined porch. Privacy for patient room windows was maintained via curved planters, walls, and plantings.

CLIENT The Christopher House
PRINCIPAL Willie W. Wong, AIA, ASLA, LEED AP BD+C
SERVICES Landscape Architecture



The construction used readily available materials designed for installation by staff without the use of heavy machinery, and with little disturbance to the adjacent patient rooms.



This new Healing Garden is located in the old drop-off of a former Emergency Department that was turned into a state-of-the-art ICU. The garden features walking paths, seating areas, memorials and donor plaques, and a contemplative labyrinth to create a serene setting with views across a steep hillside.

CLIENT Lowell General Hospital
PRINCIPAL Neal K. Emmer, AIA, Willie W. Wong, AIA, ASLA, LEED AP BD+C
SERVICES Landscape Architecture, Architecture, Interior Design

Campus Plan & Landscape

Millipore Sigma
Bedford, MA



An existing 30 acre campus, developed haphazardly over many years, was selectively demolished and repurposed to create a new character suited to the needs of the scientists, engineers and researchers at Millipore's new Research and Development Campus.

The challenge was to create a new landscape setting for three new buildings totaling over 225,000 SF, bounded by wetlands and partially located in a flood plain. The guiding principle for development was to reclaim and reallocate land previously used for site circulation and parking into usable recreational space.

The plant communities and landscape improvements are designed to recharge the surrounding wetlands through the cleansing and reuse of storm water discharge.



CLIENT	Millipore Sigma
PRINCIPAL	Willie W. Wong, AIA, ASLA, LEED AP BD+C
SERVICES	Planning, Landscape Architecture
SIZE	225,000 SF



**Foremost to our clients we are
Visionaries, Advisors, Designers, and
Managers.**

LWDA is a passionate group of Architects, Interior Designers, Landscape Architects, and Planners who believe the power of design can improve the quality of life in the communities where we live and work.

RESUMÉS





Thomas Levi, AIA
PRESIDENT

Thomas C Levi, AIA, is President and Founder of LWDA Inc., a mid-size architectural, interiors, landscape and master planning design firm founded in 1989 in Concord MA. His vision throughout his career has been to develop a design firm that encompasses a holistic design philosophy (client vision, site, building and interior) that fosters project creativity, innovation and response to client needs.

Tom brings forty-five years of experience in senior living, healthcare, corporate, laboratories and planning, including master planning and urban design for complex mixed-use urban reuse projects, new construction, adaptive reuse and renovation of existing facilities, and managing large complex projects with multiple user groups. He has worked with over 50 healthcare and senior care/living organizations at all levels of healthcare and living, and multifaceted construction types. Regardless of the project type, he integrates all four LWDA services with the intent to create integrated living and working environments that promote engagement, support and wellness for all users, based on sound business approaches. He has worked to develop a balance of appropriate creative design and business service, that allows LWDA to support its clients fully.

His special interest in senior supportive environments, rehabilitation and technology was deepened by his parents' journey through the healthcare and acute rehabilitation system. He looks at healthcare, rehabilitation and senior care/living design from the perspective of an architect, healthcare planner, clinician and family advocate. These different perspectives have allowed him to look at the design for care and aging populations more deeply and with great passion.

Tom has also completed the MA Hospital, Lean in Healthcare Program and incorporates many of its principles into LWDA's design process, and is also a Certificate holder with the National Charrette Institute (NIC). He is involved in all aspects of regulatory compliance at State levels (DoN/CoN), Department of Public Health, plan review and national codes.

Tom holds a Bachelor of Architecture from North Dakota State University and a Master of Architecture in Urban Design from the Harvard Graduate School of Design. He has served on the Boston Society of Architects Healthcare Committee and Design for Aging Committee, the Massachusetts Hospital Association DPH Regulatory Sub-Committee, and the Lahey Clinic Patient Advisory Board. He has spoken nationally on Senior Living, Patient Centered Care and the Continuum of Care in design, \$250M master planning for Boston Medical Center, technology integration in senior design, and the use of 3D Virtual Design/BIM in the design and client communication process.

Architectural Licenses are held in MA, CT, RI, NH, ME and NY. As a member of NCARB, Mr. Levi can be licensed in any state.

Affiliations: AIA, NCARB, BSA Design for Aging and Healthcare Committees, Leading Age CAST (Center of Aging Services Technology), AIA Healthcare Committee, MA Hospital Association, American College of Healthcare Executives, American Medical Rehabilitation Providers Association, New England Society of Healthcare Strategists and The Commercial Real Estate Development Association (NAIOP).

Awards: Progressive Architecture Magazine Awards
Urban Design Guidelines for the Central Artery, Boston MA
East Cambridge Redevelopment, Cambridge MA
Kenmore Square Redevelopment, Boston MA



Ruth Neeman, AIA
PRINCIPAL AND DIRECTOR OF THE SENIOR ENVIRONMENTS STUDIO

Ruth Neeman, AIA, is a Principal at LWDA, and leads the Senior Environment Studio with LWDA's holistic design philosophy to creatively and innovatively design projects that respond to client needs.

Ruth brings forty years of experience in planning, design and research focusing exclusively on environments that enable elders to remain independent and to age with dignity. Her passion for creating supportive environments for people living with cognitive impairment, highlighted in her design of numerous memory support environments, has led to ongoing professional alliances with experts in the field and initiation of Post Occupancy Evaluation research work on several of her projects. This experience and passion allows her to create strong working relationships with brand and mission-driven organizations, some with challenging budgets. Ruth has been involved in hundreds of senior projects throughout her career.

A founding member of the Boston Chapter of the Design for Aging (DFA), Knowledge Community, Ruth has served as the Co-Chair of the Boston Society of Architect's DFA committee since 2008, contributing to education and lively exchange of ideas among architects, designers, scientists, regulators, and owners.

Ruth is well versed in all aspects of regulatory compliance on state and federal levels, with particular interest in accessibility and fair housing regulations, and how they apply to the elder population.

As an industry thought leader, Ruth is an ongoing senior environment industry conferences participant as lecturer and learner. Her speaking engagements include LeadingAge National Conference 2015; Environments for Aging National Conference 2016, 2017; and Massachusetts Alzheimer Association 2005, 2006, 2007, 2011, 2012, 2017. Ruth will also be speaking in February 2018 at the upcoming Senior Living 100 conference session entitled: Design + Purpose: Building for the Next Generation of Senior Living Residents.

Ruth holds a Bachelor of Architecture and Urban Design degree from the Technion - Israel Institute of Technology. Prior to joining LWDA, Ruth was a partner at Heym, Dowds, and Neeman, Inc., where she focused exclusively on design of environments that allow seniors to engage and thrive.

Architectural Licenses are held in MA, RI and NH. As an NCARB certificate holder, Ruth can be licensed in any state.



Jonathan Gyory, AIA, ACHA, LEED AP
PRINCIPAL

Jonathan Gyory, AIA, ACHA, LEED AP, brings 35 years of experience to his role as co-director of the Healthcare Design Studio at LWDA. His strong track record leading the design, planning and management of complex, award-winning projects is based on a collaborative approach that engages the client, in-house design team, engineering consultants, contractor and regulatory agencies to produce the best possible project. A well-rounded leader with excellent conceptual, analytical, organizational, communication, and graphic skills, Jonathan is equally comfortable working with board-level executives on strategic planning and big-picture diagrams for academic medical centers, with facilities departments focusing on small scale renovations, with design collaborators to brainstorm options that respond to client needs, and with contractors to ensure the intent of design documents is clear and is carried out in the field. He has also completed the MA Hospital, Lean in Healthcare Program and incorporates many of the principles in the design process with clients. He is also involved in all aspects of regulatory compliance at State levels (DoN/CoN), Department of Public Health, plan review and national codes.

As a Principal at Shepley Bulfinch, Jonathan led the design and management of new hospital replacement campuses in Michigan (Honor Award, BSA Healthcare Facilities Design; HCD Pebble Project; ACHA Legacy Project Award) and Illinois (Soliant Healthcare Award) and led the design of a \$300 million Cancer Center at Yale New Haven Hospital (Honor Award, BSA Healthcare Facilities Design), and major additions to the Lahey Clinic Hospital in Burlington MA and the MCV/ VCU Medical Campus in Richmond, VA. Before joining LWDA, he was Director of Design at Karlsberg Architects.

More recently Jonathan led LWDA's campus masterplan redesign for Boston Medical Center to help consolidate operations on two adjacent campuses with duplicate functions into an efficient, integrated academic medical center that featured renovations of existing buildings with new additions, infrastructure, and utilities. In a later phase of the work, he led the programming, planning and rebranding of a new maternity suite that consolidates Triage, LDRs, Postpartum beds, C-Section ORs, NICU and Wellborn Nursery onto a single floor to elevate the patient and family experience with private rooms, natural light, hospitality inspired finishes, integrated patient services, and enhanced privacy. Jonathan has presented case studies at the annual AIA Conference, the Healthcare Center for Design and the Healthcare Symposium. He has been a member of the Zoning Board of Appeals in Winchester MA for the past eight years, which provides him insight from the "other side of the table" to evaluate projects and work with proponents to make them better.

Jonathan holds a BA in English from Brown University and a Master of Architecture from Harvard Graduate School of Design. Jonathan is a member of the American College of Healthcare Architects and is a licensed architect in MA. As a member of NCARB, he can be licensed in any state.



Neal K. Emmer, AIA, LEED Green Associate
PRINCIPAL

Neal K. Emmer is a Principal at LWDA with over 30 years of experience in the design profession. As Co-Director of LWDA's Healthcare Studio, Neal has managed projects of varying size and complexity that encompass the full spectrum of healthcare: ambulatory, outpatient, medical offices, urgent care, acute care, rehabilitation and medical offices. Neal has great investigatory skills to ferret out the key code considerations and construction challenges confronting a project, and his keen attention to detail ensures the end result is seamless and compliant with current regulations and standards.

Prior to joining LWDA, Neal enjoyed a long tenure as Campus Architect at Boston Medical Center, where he managed over 500 projects, providing him unique insight into the operations of a large inner city academic hospital. His work included internally managed renovations and projects with outside consulting architects, engineers and vendors. This knowledge and experience, together with his project management leadership and design talent, contribute to his successful management of the Healthcare Studio at LWDA and the overall success of LWDA projects for healthcare clients. Neal is involved in all aspects of regulatory compliance at State levels (DoN/CoN), Department of Public Health, plan review and national codes.

Neal majored in Fine Arts at Fairleigh Dickinson University and received a Bachelor of Architecture from the Boston Architectural College. He has served on the Boston Society of Architects Codes Committee and was past Chairman of the Town of Carlisle's Historical Commission.

Architectural Licenses are held in Massachusetts and Wisconsin. As a member of NCARB, Neal can be licensed in any state.



Neil Harrigan, AIA
SENIOR ASSOCIATE

Neil Harrigan is a registered architect with 25 years of experience covering a full range of projects, from large scale airports and convention centers, to medium size gymnasiums, rehab and healthcare facilities, to interior renovations and residential projects. A long-time employee of LWDA, Neil has contributed to LWDA's Education, Sustainability, Social, and BIM committees. Neil leads multiple teams in design excellence, technical approaches to building envelope, engineering systems, sustainability, regulatory requirements, and construction technology. His contributions to the firm's design direction has been invaluable. Neil is active in various professional and community endeavors outside the office. He is a trustee and member of the development committee at the Riverside Boat Club in Cambridge MA. He has also served as a thesis advisor at the Boston Architectural College.

Neil received a Bachelor of Science and a Master of Architecture from MIT. He received MIT's Traveling Fellowship and was an Entrant for the SOM Traveling Fellowship. He is licensed to practice Architecture in MA.



Kevin Burns, Associate AIA
SENIOR ASSOCIATE

Kevin Burns has over 20 years of architectural design and project management experience, with the last 16 years dedicated to healthcare renovation projects of varying scale and complexity. His strengths include strong team communication, project management, and organizational skills, and a deep knowledge of healthcare requirements, codes, DPH expectations, and design approaches to renovating in occupied buildings. He is a talented designer and first-rate problem solver.

Kevin is LWDA's Co-Chair of CAD/BIM Management and the Regulatory / Code Committee, as well as a leader in the firm's LEAN and Quality Assessment / Quality Control oversight. He is also a MA Hospital Lean in Healthcare Program Certificate holder.

Kevin received a Bachelor in Communication Studies from University of Connecticut and received a Bachelor of Architecture from Boston Architectural College.



John Murray, AIA, LEED Green Associate
SENIOR ASSOCIATE

John Murray has over 30 years of architectural experience. He serves as a senior project manager and project architect on multi-family residential, healthcare, and senior environment projects. John has been involved in all phases of work, from initial client contact to project closeout, utilizing a full range of professional skills from programming and budgeting to construction oversight and post-occupancy evaluation. He has a high level of knowledge of senior environments, including state regulatory compliance, accessibility, attention to detail, renovations, and new construction. John has been a leader in LWDA's BIM practice, managing fully integrated BIM projects through construction completion.

John received a Bachelor of Architecture and a BS. in Building Sciences from Rensselaer Polytechnic Institute. He is a Licensed Architect in MA.



Lawrence Passmore, Associate AIA
ASSOCIATE / DIRECTOR OF TECHNOLOGY

Lawrence Passmore serves a dual role at LWDA, as a designer with over 15 years of architectural experience, and as LWDA's Director of Technology. His versatility ranges from architectural design and detailing to graphic design and technology management. Lawrence has been involved in healthcare, commercial and corporate projects since 2000. He has the unique talent to understand complex abstract issues and communicate them in easily understandable graphic form and is co-leader in the brochure and website development at LWDA. He serves as Co-Chair of LWDA's BIM Committee, where he manages the integration of technology, design, and visualization.

Lawrence received a Bachelor of Environmental Design with a major in Architecture from the University of Colorado, and a Master of Architecture from the Boston Architectural College. He is Associate member of the AIA.



Gracyn Robinson, IIDA Associate

DIRECTOR OF BUSINESS DEVELOPMENT, SENIOR INTERIOR DESIGNER / PROJECT MANAGER

Gracyn Robinson is Director of Business Development and an Interior Designer at LWDA. Gracyn brings twenty-five years of experience in multiple sectors of the architecture and design industry. She was chosen as a participating designer in the 25th Anniversary This Old House in Carlisle, MA, and has worked in both sides of the industry as a commercial and residential interior designer, project manager and master planning consultant. Her business background also includes account management in vendor/sales, covering national accounts. Gracyn combines her business experience with design to bring a unique skillset to her role at LWDA.

Gracyn's ability to bring together all parties on a project, given her extensive training and experience in interior design, in addition to her knowledge of FF&E, specifications, and project management, makes her a valuable team player.

Gracyn received her BA from Middlebury College (VT) and Interior Design Degree from The New England School of Art & Design, Suffolk University (MA).



Christine Lucido, IIDA, NCIDQ

SENIOR INTERIOR DESIGNER / PROJECT MANAGER

Christine Lucido is a Senior Interior Designer and Project Manager. She is an articulate, creative and passionate interior designer with over 15 years of experience in the Senior Environment, Healthcare, Corporate, and Higher Education industries. This diverse experience, and her 5 years working as a national account manager and designer in the contract furniture industry, broadened her knowledge in products and cost value and ignited her passion as a strong client advocate.

Christine combines her diverse design background and high level of service to ensure the client's vision for each project is clearly and seamlessly executed. Her superior client relationship skills enable her to work effectively with clients to quickly zero in on their objectives and deliver custom solutions on time and within budget.

Christine holds a Bachelor of Science from Endicott College, where she concentrated in art and interior design. She is an accredited designer through the National Council for Interior Design Qualification, and an active member of the IIDA (International Interior Design Association).



Rosemary Terella, IIDA, LEED AP BD+C, NCIDQ

DIRECTOR OF INTERIOR DESIGN

Rosemary Terella is Director of Interior Design at LWDA. A talented designer with over 10 years of experience in a variety of sectors, including Senior Environments, Healthcare, K-12, Higher Education, and Multi-Family Housing, Rosie uses her excellent listening and communication skills to work closely with clients to develop goals and refine their vision, modeling design options in 3D to accurately portray designs to help them visualize their spaces.

Rosie brings an extensive knowledge of interior finishes and building materials, which she tailors towards each project's needs for durability, budgetary considerations, and aesthetic goals. She also manages research efforts to educate the LWDA team about new materials and furniture that are supportive and friendly to elders living with a variety of physical and cognitive conditions.

Rosie holds a Bachelor of Fine Arts from Syracuse University, where she focused on art and interior design. She is accredited by the National Council for Interior Design Qualification, and is passionate about sustainability. She is an accredited professional through LEED (Leadership in Energy and Environmental Design) in the Building Design and Construction track method.



Willa Codkind

INTERIOR DESIGNER

Willa Codkind is an Interior Designer at LWDA. Coming from a background in hospitality, spa, restaurant, and residential projects, she understands how to create energetic and desirable spaces grounded in emotion and habit. Her detail oriented approach, creative ability to conceive of and apply broad design strokes, and her personable nature make her a creative force that her clients rely on.

Willa holds a Master's of Arts, Interior Architecture from New England School of Art and Design and a Bachelor of Arts, French Studies and Studio art from Wheaton College. She speaks fluent french and is passionate about restoration and reuse.



Katherine Robinson, AIA, LEED AP
SENIOR PROJECT MANAGER

Katherine Robinson is a Senior Project Manager with over 30 years of experience in the design of acute-care hospitals, ambulatory care centers, rehabilitation hospitals, nursing homes, continuing care retirement communities, and colleges/universities.

She excels at planning, technical problem-solving, and the integration of engineering, sustainability, and architecture to create high-performance buildings that meet rigorous programmatic, schedule, and budget challenges.

Katherine holds a Bachelor of Science in Architecture from the University of Virginia and a Master of Architecture from the University of Michigan. She is a member of Boston Society of Architects' Design for Aging Committee and the Methuen Historic District Commission. She is also a MA Hospital, Lean in Healthcare Program Certificate holder. Katherine is licensed to practice Architecture in MA.



Jonathan Campbell, AIA
SENIOR ARCHITECT & PROJECT MANAGER

Jonathan Campbell is a Senior Architect and Project Manager at LWDA with more than 20 years of experience in the design of healthcare, rehabilitation, and senior care environments. Jonathan has practiced in Massachusetts, New Mexico, and Texas, and has designed work in Wisconsin, Vermont, Pennsylvania, and Florida.

Jonathan's work bridges the divide between highly technical programmatic requirements and sensitive, user friendly environments to generate solutions for Med Surge Units, Birthing Suites, MRI Suites, and Radiology Departments. Jonathan brings outstanding people skills to help clients solve problems creatively.

Jonathan holds a Bachelor of Arts from Vassar College in Science, Technology & Society and Art History, and a Master of Architecture from Rice University.



Terrence Sturm, AIA
SENIOR ARCHITECT & PROJECT MANAGER

Terrence Sturm has 23 years of diversified architectural practice across different building types, including multifamily residences, large single-family homes, banks, car dealerships, animal hospitals, offices, medical fit out and corporate work. His broad experience includes roles as Project Manager, Project Architect, Senior Associate, Department Head and Architect of Record.

Terrence's passion for detail and exacting standards are revealed in the elegant technical drawings he produces in 3D Modeling and BIM. He can work individually on small projects, or as part of a multi-disciplinary team for large scale work. Terrence is a key contributor to LWDA's BIM development group, intern development, business development, marketing, design and production.

Terrence received a Bachelor of Architecture from the Boston Architectural College.



Evan Halstead, Associate AIA, LEED AP ID+C
PROJECT DESIGNER

Evan Halstead is an architectural designer at LWDA. He brings 15 years of experience to the design of healthcare, senior living and senior care projects. His professional interests include the application of sustainable practices and materials to design projects. He has been part of the LEED certification management process for projects, and co-chairs the Green committee at LWDA.

Evan is a member of the USGBC MA Chapter and participant of the MA Living Building Collaborative.

Evan holds a Bachelor of Design Studies, Sustainable Design from Boston Architectural College.



Craig Boyer, Associate AIA
BIM MANAGER

Craig Boyer is the Building Information Modeling (BIM) Manager at LWDA. He implements and supports the use of technology into the 3D-based architectural design and documentation process, and serves as co-chair of LWDA's BIM committee. Craig also works as an architectural designer.

Craig is a former member of the ArchiCAD technical support team tasked with troubleshooting client issues, educating users about the software, and developing content for Graphisoft North America, Newton, Massachusetts. Craig has presented at several conferences, including the Graphisoft BIM 2015 North America User Conference in Las Vegas, and the ArchiCAD User Group at ABX 2015.

Craig has a Bachelor of Science in Architecture and a Master of Architecture from Wentworth Institute of Technology.



Keith Bradley, Associate AIA, ASAI
DIRECTOR OF MARKETING AND VISUALIZATION SPECIALIST

Keith Bradley is the LWDA Marketing Director, working across project teams on 3D Virtual Design, architectural visualization, graphics, and marketing opportunities. Keith is the creative lead for advertising and marketing of architecture, interior design, landscape architecture, and planning projects, working with LWDA architects, designers, other team members, and clients to generate marketing materials, presentations, websites, photography, and interactive experiences. He is currently working on virtual reality, real-time rendering technologies, and photorealistic renderings and movies to achieve a higher standard of visualization.

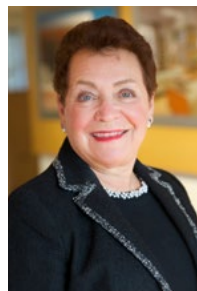
Keith holds a Bachelor of Architecture from California Polytechnic State University, San Luis Obispo.



Judy Belanger
BUSINESS MANAGER

Judy Belanger brings 30 years of experience in the accounting profession, including 25 within the A/E and Consulting field, to her role as LWDA's Business Manager and Accountant. Judy manages all financial activities at LWDA, including preparation of all financial reporting, cash flow management, budget preparation and analysis.

Judy received a Bachelor of Science in Business Administration from Salem State University, with a major in Accounting.



Lois Siegelman, MS, FACHE
BUSINESS DEVELOPMENT & HEALTHCARE / REHABILITATION ADVISOR

Lois Siegelman has more than 40 years of experience in healthcare administration. Lois began her career as a Physical Therapist, working with Rehabilitation services and providers in a variety of settings including Acute Care Hospitals, Long Term Acute Care Hospitals, Rehabilitation Hospitals, Skilled Nursing Facilities and Outpatient Rehabilitation Centers.

In addition to her clinical experience, Mrs. Siegelman served as the CEO of New England Rehabilitation Hospital, a 200-bed rehabilitation hospital providing inpatient and outpatient services. She has also served as a consultant to over 30 rehabilitation hospitals, rehabilitation units and skilled nursing units in acute care hospitals throughout the northeast as Corporate Vice-President of AdvantageHealth Corporation and Director of Contract Services at Spaulding Rehabilitation Hospital. Consultation services included start-up and ongoing oversight of facilities, as well as network development. Her acute care experience includes service as an Assistant Administrator at Boston University Medical Center's University Hospital for many years, overseeing a range of clinical and support service departments. Lois also has experience with Senior Living/Assisted Living, serving as Interim President of the Senior Living Division under HealthSouth.

Lois obtained her Bachelor and Master of Science degrees from Boston University and is currently the President of the Sargent College Alumni Association and a Board Member of the Healthcare Management Association of Massachusetts.



Brenda Hyland-Miller, MBA, PT, LEAN
LEAN DESIGN SPECIALIST & HEALTHCARE CONSULTANT

Brenda Hyland-Miller serves as LWDA's Lean Design specialist, based on her diverse background as a Physical Therapist and her extensive experience in healthcare delivery, senior management, operations, planning, consulting, and project management experience. Brenda has led the planning and start-up of new hospitals and outpatient centers, unit and facility renovations, and the integration of advanced technologies into clinical practice.

During the Conceptual Design and Programming phases, Brenda facilitates charrettes and brainstorming sessions to create a collaborative team process that engages stakeholders on systems/process thinking, efficiency, and best solutions by examining current state, patient experience, and program development, utilizing Lean tools to develop options, evaluate operational models and incorporate institutional standards. Brenda has specialized training in human movement, Lean Six Sigma Healthcare Black Belt, group facilitation, and application of analytical tools and processes. Her publications, presentations and educational programs nationally include: 20+ ranging from Rehabilitation Robotics (15), Clinical Rehabilitation to Market Forecasting.

Brenda's extensive healthcare leadership experience includes: Principal, Benchmark Health Care Consulting Inc.; Interactive-Motion Technologies consultant to develop, manage, and provide clinical robotic training workshops for clinicians and researchers in the US, Europe, Australia, Central and South America, and Asia; Administrative Director of Ancillary Services, Strategic Planning & Analytics, Spaulding Rehabilitation Hospital, Boston, MA; Director of Rehabilitation Services, Melrose Wakefield Hospital, Melrose, MA; Director of Rehabilitation, United General Hospital, Sedro Woolley, WA.

Brenda's education background: Master of Business Administration, Northeastern University, 1994 sum cum laude; Bachelor of Science, Physical Therapy, University of Washington, 1978 magna cum laude; Bachelor of Arts, Human Movement Studies, University of Washington, 1976 cum laude; Project Management Certificate, Northeastern University, 2004; LEAN/Six Sigma Healthcare Black Belt Certification.

Partial List of Clients



Senior Environments For Profit Providers

- Omega
- Five Star Senior Living
- Senior Housing Trust
- Maplewood Senior Living
- Vitality Senior Living
- Golden Living Centers
- Kindred Healthcare
- Sunbridge Healthcare
- Care One/Healthbridge
- Epoch Senior Living
- Wingate Healthcare
- Wingate Residences on the East Side
- Salmon Health and Retirement
- Bane Care
(Hancock Park)
- Colonial Poplin Nursing and Rehabilitation Facility
- Poplin Way Assisted Living
- Oriol Health Care
(Holden and Oakdale)
- Starr Family (Southwood at Norwell)
- Athena Skilled Nursing Care
(Meadowbrook of Granby)
- Kindred
(Starr Farm Nursing Center)
(Eagle Pond Nursing Home)
- Eaton Family
(Sunny Acres Nursing Home)
- Queen Anne Nursing Home
- Bay Cove HS (Andrew House)
- Landmark Solutions
(Saint Francis Rehabilitation & Nursing Ctr)
- Karger Family
(Belmont Manor Nursing Home)
- Pleasant Bay Nursing and Rehabilitation
- Amherst Nursing Home
- The Capachin family
(Maples Rehabilitation and Nursing Center)
- Sterling Village
- Oasis at Dodge Park
- Medway Country Manor
- The Tolles family
(Island Terrace)
- Rio Blanco Coro
(White River Junction)

Senior Environments Non Profit Providers

- Spaulding Rehab Brighton
- Hebrew Senior Life
(Center Comm. of Brookline)
(Simon Fireman Community)
(Jack Satter House)
- Cape Code Healthcare
(Heritage at Falmouth)
(JML Care Center)
- Fall River Jewish Home
- Nevins Nursing and Rehabilitation Center
- Saint Elizabeth Manor
- South Cove Manor
- D'Youville Center for Advanced Therapy
- Mary Ann Morse Healthcare Center
- Heritage at Framingham
- Homestead memory support
- Covenant Health
(Maristhill Nursing & Rehabilitation Center)
(Youville House Memory Support)
- Geriatric Authority of Holyoke
- The Christopher House
- Edgewood A Life care Community
- Rogerson Communities
(Sophia Snow Place)
(Pond Meadows)
(Pond Home)
- Geer Corporation
(Geer Village)
- Spectrum Adult Day Center
- Berkshire Place
- Hellenic Care
(Hellenic Nursing & Rehabilitation Center)
- New England Deaconess
(The Gardens at Newbury Court)
(Rivercrest Wellness and Rehab)
- Tockwotton Home
- Scandinavian Rehabilitation and Skilled Nursing
- Scandinavian Assisted Living Community
- Knollwood Nursing Center
- Woodridge Nursing Home
- Lahey Health
(Ledgewood Nursing Care)
- Geriatric Authority of Milford
(Countryside Health Care of Milford)
- Armenian Women's Welfare Assoc.
(Armenian Home)
- Bethany Healthcare Center
- Benjamin Healthcare Center

- Jewish Rehabilitation Center
- Goddard House
- The Boston Home
- National Health
(Newton Wellesley Nursing Home)
- Steere House Nursing & Rehabilitation Center

Healthcare Campus Master Planning

- Boston Medical Center
- Braintree Rehabilitation Hospital
- Erich Lindemann Mental Health Hospital
- Hallmark Health System
(Melrose Wakefield Hospital)
(Lawrence Memorial Hospital)
(Malden Hospital/Medical Center)
- New England Rehabilitation Hospital
- Reliant Healthcare
- Spaulding Rehabilitation Hospital

Healthcare

- Partners Healthcare
- Spaulding Rehabilitation Hospital
- Emerson Hospital
- Lowell General Hospital
- Holy Family Hospital
- Norwood Hospital
- Hallmark Health System
- Melrose Wakefield Hospital
- Lawrence Memorial Hospital
- Malden Hospital/Medical Center
- Eric Lindemann Mental Health Hospital
- Boston Medical Center

Inpatient Rehabilitation Hospitals

- Spaulding Rehabilitation Hospital
- New England Rehabilitation Hospital
- Braintree Rehabilitation Hospital

Corporate

- Millennium Partners
(Corporate Offices)
(10 St James)
(75 Arlington)
(Equinox / Yoga)
- Millennium Towers (Private Condominium)
- Macomber Development Associates
- The Bulfinch Companies

Improving the Quality of Life Through Design

LWDA is a passionate group of professionals who believe the power of design can improve the quality of life in the communities where we live and work.

Quality Design, Service, Innovation, Teamwork, and Sound Business are the foundation of our success. We are a client-centric firm led by working principals dedicated to design excellence.



Creating Livable and Engaging Communities for Seniors



LWDA.COM

45 WALDEN STREET, CONCORD, MA 01742
978-371-1945

